
Product Datasheet

NKX2.2 Antibody (orb386099)

Description

Expression of NKX2.2 has been found in neuroendocrine


Species/Host

Mouse

Reactivity

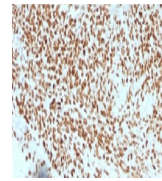
Human

Conjugation

Unconjugated

Tested Applications

IHC-P



IHC testing of FFPE Ewings sarcoma with

...

Immunogen

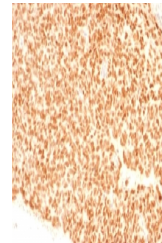
A human partial recombinant protein corresponding to amino acids 1-119 was used as the immunogen for this NKX2.2 antibody.

Preservatives

0.2 mg/ml in 1X PBS with 0.1 mg/ml rAlbumin (US sourced) and 0.05% sodium azide

Storage

Store the NKX2.2 antibody at 2-8°C (with azide) or aliquot and store at -20°C or colder (without azide).



IHC testing of FFPE Ewings sarcoma with

...

Note

For research use only

Application notes

Titering of the NKX2.2 antibody may be required for optimal performance.

Formula

0.2 mg/ml in 1X PBS with 0.1 mg/ml BSA (US sourced) and 0.05% sodium azide

Isotype

Mouse IgG1, kappa

Clonality

Monoclonal

Purity

Protein G affinity chromatography

Uniprot ID

[O95096](#)

Hazard Information

This NKX2.2 antibody is available for research use only.

Entrez

[4821](#)

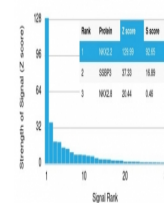
Dilution Range

Immunohistochemistry (FFPE): 1-2ug/ml for 30 min at RT

Expiration Date

12 months from date of receipt.

Human Protein Microarray Specificity Validation



Analysis of HuProt (TM) microarray conta...