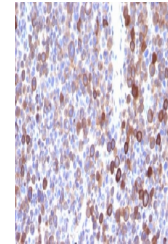


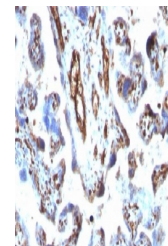
Product Datasheet

Moesin Antibody (orb386080)

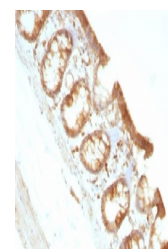
Description	Moesin, a member of the talin-4.1 superfamily, is a linking protein of the sub-membranous actin cyto...
Species/Host	Mouse
Reactivity	Human, Rat
Conjugation	Unconjugated
Tested Applications	FACS, IF, IHC-P, WB
Immunogen	Recombinant full-length human protein was used as the immunogen for the Moesin antibody.
Preservatives	0.2 mg/ml in 1X PBS with 0.1 mg/ml rAlbumin (US sourced) and 0.05% sodium azide
Storage	Store the Moesin antibody at 2-8°C (with azide) or aliquot and store at -20°C or colder (without azide).
Note	For research use only
Application notes	Titering of the Moesin antibody may be required for optimal performance.
Formula	0.2 mg/ml in 1X PBS with 0.1 mg/ml BSA (US sourced) and 0.05% sodium azide
Isotype	Mouse IgG1, kappa
Clonality	Monoclonal
Purity	Protein G affinity chromatography
Uniprot ID	P26038
Hazard Information	This Moesin antibody is available for research use only.
Dilution Range	Flow cytometry: 1-2ug/million cells,Immunofluorescence: 2-4ug/ml,Western blot: 1-2ug/ml,Immunohistochemistry (FFPE): 1-2ug/ml for 30 min at RT
Expiration Date	12 months from date of receipt.



IHC testing of FFPE human melanoma with ...



IHC testing of FFPE human placenta with ...



IHC testing of FFPE rat colon with Moesi...