
Product Datasheet

DOG1 Antibody / TMEM16A / ANO1 (orb386073)

Description

DOG 1 is expressed in the human gastrointestinal


Species/Host

Mouse

Reactivity

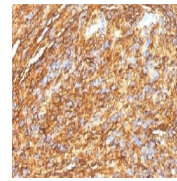
Human

Conjugation

Unconjugated

Tested Applications

IHC-P



IHC testing of FFPE human gastrointestinal...

Immunogen

A recombinant human protein corresponding to amino acids 2-101 of human DOG1/ANO1 was used as the immunogen for this DOG 1 antibody.

Preservatives

0.2 mg/ml in 1X PBS with 0.1 mg/ml rAlbumin (US sourced) and 0.05% sodium azide

Storage

Store the DOG 1 antibody at 2-8°C (with azide) or aliquot and store at -20°C or colder (without azide).

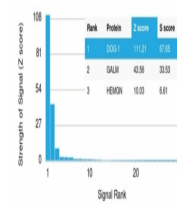
Note

For research use only

Application notes

The concentration stated for each application is a general starting point. Variations in protocols, secondaries and substrates may require the DOG 1 antibody to be titrated up or down for optimal performance.

Human Protein Microarray Specificity Validated



Analysis of HuProt (TM) microarray conta...

Formula

0.2 mg/ml in 1X PBS with 0.1 mg/ml BSA (US sourced) and 0.05% sodium azide

Isotype

Mouse IgG2b, kappa

Clonality

Monoclonal

Purity

Protein G affinity chromatography

Uniprot ID

[Q5XXA6](#)

Hazard Information

This DOG 1 antibody is available for research use only.

Entrez

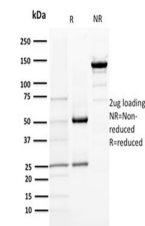
[55107](#)

Dilution Range

Immunohistochemistry (FFPE): 1-2ug/ml for 30 min at RT

Expiration Date

12 months from date of receipt.



SDS-PAGE analysis of purified, BSA-free ...