
Product Datasheet

DOG1 Antibody / TMEM16A / ANO1 (orb386072)

Description

DOG1 is expressed in the human gastrointestinal



gastrointe...

Species/Host

Mouse

Reactivity

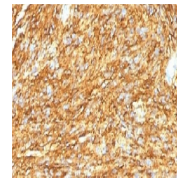
Human

Conjugation

Unconjugated

Tested Applications

IHC-P



IHC testing of FFPE human gastrointestinal...

Immunogen

A recombinant human protein corresponding to amino acids 2-101 of human DOG1 was used as the immunogen for this DOG1 antibody.

Preservatives

0.2 mg/ml in 1X PBS with 0.1 mg/ml rAlbumin (US sourced) and 0.05% sodium azide

Storage

Store the DOG1 antibody at 2-8°C (with azide) or aliquot and store at -20°C or colder (without azide).

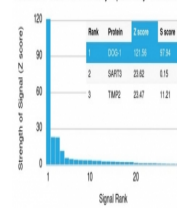
Note

For research use only

Application notes

The concentration stated for each application is a general starting point. Variations in protocols, secondaries and substrates may require the DOG1 antibody to be titrated up or down for optimal performance.

Human Protein Microarray Specificity Validation



Analysis of HuProt (TM) microarray conta...

Formula

0.2 mg/ml in 1X PBS with 0.1 mg/ml BSA (US sourced) and 0.05% sodium azide

Isotype

Mouse IgG2b, kappa

Clonality

Monoclonal

Purity

Protein G affinity chromatography

Uniprot ID

[Q5XXA6](#)

Hazard Information

This DOG1 antibody is available for research use only.

Entrez

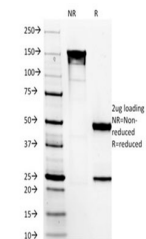
[55107](#)

Dilution Range

Immunohistochemistry (FFPE): 1-2ug/ml for 30 min at RT

Expiration Date

12 months from date of receipt.



SDS-PAGE analysis of purified, BSA-free ...