

---

## Product Datasheet

### Thrombomodulin Antibody / CD141 (orb386063)

**Description**

It recognizes a protein of 75kDa, identified as



gl...

**Species/Host**

Mouse

**Reactivity**

Human

**Conjugation**

Unconjugated

**Tested Applications**

ELISA, IHC-P

**Immunogen**

Human recombinant partial protein corresponding to amino acids 69-194 was used as the immunogen for this Thrombomodulin antibody.

**Preservatives**

0.2 mg/ml in 1X PBS with 0.1 mg/ml rAlbumin (US sourced) and 0.05% sodium azide

**Storage**

Store the Thrombomodulin antibody at 2-8°C (with azide) or aliquot and store at -20°C or colder (without azide).

**Note**

For research use only

**Application notes**

The concentration stated for each application is a general starting point. Variations in protocols, secondaries and substrates may require the Thrombomodulin antibody to be titered up or down for optimal performance.

**Formula**

0.2 mg/ml in 1X PBS with 0.1 mg/ml BSA (US sourced) and 0.05% sodium azide

**Isotype**

Mouse IgG2a, kappa

**Clonality**

Monoclonal

**Purity**

Protein G affinity chromatography

**Uniprot ID**

**P07204**

**Hazard Information**

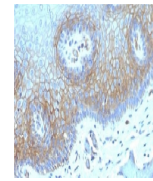
This Thrombomodulin antibody is available for research use only.

**Dilution Range**

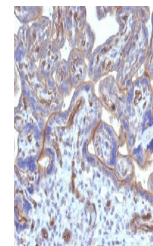
ELISA: 2-4ug/ml (order BSA/azide-free format), Immunohistochemistry (FFPE): 1-2ug/ml for 30 min at RT

**Expiration Date**

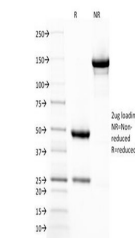
12 months from date of receipt.



IHC testing of FFPE human cervical carci...



IHC testing of FFPE human placenta with ...



SDS-PAGE Analysis of Purified, BSA-Free ...