

---

## Product Datasheet

### Lambda Light Chain Antibody / Lambda Antibody (orb386002)

**Description**

Antibodies are produced by B lymphocytes, each


**Species/Host**

Mouse

**Reactivity**

Human

**Conjugation**

Unconjugated

**Tested Applications**

FACS, IF, IHC-P, WB

**Immunogen**

IgG purified from human serum was used as the immunogen for this Lambda Light Chain antibody.

**Preservatives**

0.2 mg/ml in 1X PBS with 0.1 mg/ml rAlbumin (US sourced) and 0.05% sodium azide

**Storage**

Store the Lambda Light Chain antibody at 2-8°C (with azide) or aliquot and store at -20°C or colder (without azide).

**Note**

For research use only

**Application notes**

The optimal dilution of the Lambda Light Chain antibody for each application should be determined by the researcher.

**Formula**

0.2 mg/ml in 1X PBS with 0.1 mg/ml BSA (US sourced) and 0.05% sodium azide

**Isotype**

Mouse IgG1, kappa

**Clonality**

Monoclonal

**Purity**

Protein G affinity chromatography

**Uniprot ID**

**P01701, P01842**

**Hazard Information**

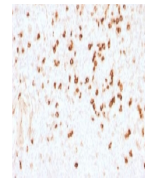
This Lambda Light Chain antibody is available for research use only.

**Dilution Range**

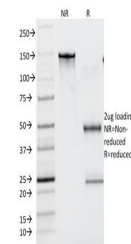
Flow cytometry: 0.5-1ug/million cells, Immunofluorescence: 1-2ug/ml, Western blot: 0.5-1ug/ml, Immunohistochemistry (FFPE): 0.5-1ug/ml for 30 min at RT

**Expiration Date**

12 months from date of receipt.



IHC testing of FFPE human tonsil stained...



SDS-PAGE Analysis of Purified, BSA-Free ...