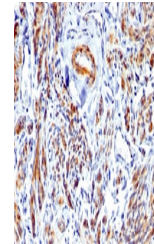


Product Datasheet

Caldesmon / CAD Antibody HMW (orb385973)

Description	Caldesmon is a developmentally regulated protein involved in smooth muscle and non-muscle contractio...
Species/Host	Rabbit
Reactivity	Human, Rat
Conjugation	Unconjugated
Tested Applications	IHC-P, WB
Immunogen	A partial human protein was used as the immunogen for the Caldesmon antibody.
Preservatives	0.2 mg/ml in 1X PBS with 0.1 mg/ml rAlbumin (US sourced) and 0.05% sodium azide
Storage	Store the Caldesmon antibody at 2-8°C (with azide) or aliquot and store at -20°C or colder (without azide).
Note	For research use only
Application notes	Titering of the Caldesmon antibody may be required for optimal performance.
Formula	0.2 mg/ml in 1X PBS with 0.1 mg/ml BSA (US sourced) and 0.05% sodium azide
Isotype	Rabbit IgG
Clonality	Polyclonal
Purity	Protein A affinity chromatography
Uniprot ID	Q05682
Hazard Information	This Caldesmon antibody is available for research use only.
Dilution Range	Immunohistochemistry (FFPE): 1-2ug/ml for 30 min at RT, Western blot: 1-2ug/ml
Expiration Date	12 months from date of receipt.



IHC testing of FFPE human uterus with re...



IHC testing of FFPE rat uterus with reco...



Western blot testing of human ovary tiss...