
Product Datasheet

Galectin 1 Antibody / LGALS1 (orb385945)

Description

Galectin 1 is a member of the beta-galactoside-binding

Species/Host

Mouse

Reactivity

Human

Conjugation

Unconjugated

Tested Applications

ELISA, IF, IHC-P, WB

Immunogen

A human partial recombinant protein corresponding to amino acids 12-108 was used as the immunogen for the Galectin 1 antibody.

Preservatives

0.2 mg/ml in 1X PBS with 0.1 mg/ml rAlbumin (US sourced) and 0.05% sodium azide

Storage

Store the Galectin 1 antibody at 2-8°C (with azide) or aliquot and store at -20°C or colder (without azide).

Note

For research use only

Application notes

Titering of the Galectin 1 antibody may be required for optimal performance.

Formula

0.2 mg/ml in 1X PBS with 0.1 mg/ml BSA (US sourced) and 0.05% sodium azide

Isotype

Mouse IgG1, lambda

Clonality

Monoclonal

Purity

Protein G affinity chromatography

Uniprot ID

P09382

Hazard Information

This Galectin 1 antibody is available for research use only.

Dilution Range

ELISA: 2-4ug/ml (order BSA/azide-free format), Immunofluorescence: 1-2ug/ml, Western blot: 1-2ug/ml, Immunohistochemistry (FFPE): 0.5-1ug/ml for 30 min at RT

Expiration Date

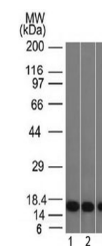
12 months from date of receipt.



Western blot testing of human 1) JEG-3 a...



Western blot testing of human HeLa cell ...



Western blot testing of human 1) HeLa, 2...