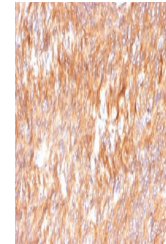


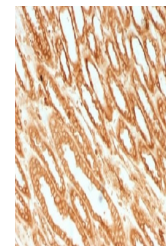
Product Datasheet

Calnexin Antibody (orb385943)

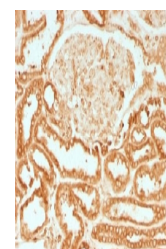
Description	It recognizes a protein of 90kDa, which is identified as Calnexin. Secretory and transmembrane prote...
Species/Host	Mouse
Reactivity	Human
Conjugation	Unconjugated
Tested Applications	ELISA, IF, IHC-P, WB
Immunogen	A partial human recombinant protein was used as the immunogen for the Calnexin antibody.
Preservatives	0.2 mg/ml in 1X PBS with 0.1 mg/ml rAlbumin (US sourced) and 0.05% sodium azide
Storage	Store the Calnexin antibody at 2-8°C (with azide) or aliquot and store at -20°C or colder (without azide).
Note	For research use only
Application notes	Titring of the Calnexin antibody may be required for optimal performance.
Formula	0.2 mg/ml in 1X PBS with 0.1 mg/ml BSA (US sourced) and 0.05% sodium azide
Isotype	Mouse IgG2b, kappa
Clonality	Monoclonal
Purity	Protein G affinity chromatography
Uniprot ID	P27824
Hazard Information	This Calnexin antibody is available for research use only.
Dilution Range	ELISA: 2-4ug/ml (order BSA/azide-free format),Western blot: 1-2ug/ml,Immunohistochemistry (FFPE): 1-2ug/ml for 30 min at RT,Immunofluorescence: 1-2ug/ml
Expiration Date	12 months from date of receipt.



IHC testing of FFPE human small intestine...



IHC testing of FFPE human renal cell carcinoma...



IHC testing of FFPE human renal cell carcinoma...