
Product Datasheet

Interferon gamma Antibody / IFNG (orb385937)

Description

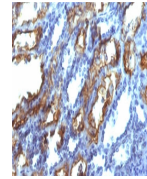
Recognizes a protein of 20-25kDa, identified as



IFNg...

Species/Host

Mouse


Reactivity

Human

Conjugation

Unconjugated

IHC testing
of FFPE
human renal
cell car...

Tested Applications

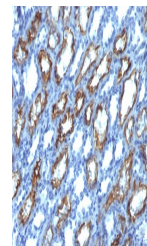
IHC-P

Immunogen

Human recombinant protein was used as the immunogen for the IFN gamma antibody.

Preservatives

0.2 mg/ml in 1X PBS with 0.1 mg/ml rAlbumin (US sourced) and 0.05% sodium azide


Storage

Store the IFN gamma antibody at 2-8°C (with azide) or aliquot and store at -20°C or colder (without azide).

Note

For research use only

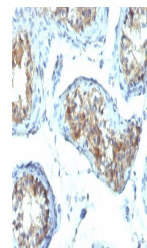
IHC testing
of FFPE
human renal
cell car...

Application notes

Optimal dilution of the IFN gamma antibody should be determined by the researcher.

Formula

0.2 mg/ml in 1X PBS with 0.1 mg/ml BSA (US sourced) and 0.05% sodium azide


Isotype

Mouse IgG2b, kappa

Clonality

Monoclonal

Purity

Protein G affinity chromatography

Uniprot ID

P01579

IHC testing
of FFPE
human
testis with
IF...

Hazard Information

This IFN gamma antibody is available for research use only.

Dilution Range

Immunohistochemistry (FFPE): 1-2ug/ml for 30 min at RT

Expiration Date

12 months from date of receipt.