

---

## Product Datasheet

### CLIP Antibody / ACTH (orb385936)

**Description**

ACTH (or Corticotropin) is a 39 amino acid active peptide

**Species/Host**

Mouse

**Reactivity**

Human

**Conjugation**

Unconjugated

**Tested Applications**

IHC-P

**Immunogen**

Amino acids 25-39 (NGAEDESAEAFPLEF) of Adrenocorticotrophic hormone (CLIP sequence) were used as the immunogen for this ACTH antibody.

**Preservatives**

0.2 mg/ml in 1X PBS with 0.1 mg/ml rAlbumin (US sourced) and 0.05% sodium azide

**Storage**

Store the ACTH antibody at 2-8°C (with azide) or aliquot and store at -20°C or colder (without azide).

**Note**

For research use only

**Application notes**

The concentration stated for each application is a general starting point. Variations in protocols, secondaries and substrates may require the ACTH antibody to be titered up or down for optimal performance.

**Formula**

0.2 mg/ml in 1X PBS with 0.1 mg/ml BSA (US sourced) and 0.05% sodium azide

**Isotype**

Mouse IgG1, kappa

**Clonality**

Monoclonal

**Purity**

Protein G affinity chromatography

**Hazard Information**

This ACTH antibody is available for research use only.

**Entrez**

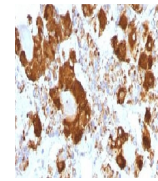
[5443](#)

**Dilution Range**

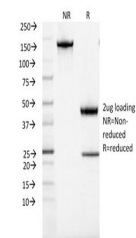
Immunohistochemistry (FFPE): 0.5-1ug/ml for 30 min at RT

**Expiration Date**

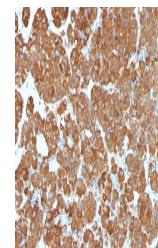
12 months from date of receipt.



IHC testing of FFPE human pituitary gland...



SDS-PAGE Analysis of Purified, BSA-Free ...



IHC testing of FFPE human pituitary gland...