
Product Datasheet

CLIP Antibody / ACTH (orb385935)

Description

ACTH (or Corticotropin) is a 39 amino acid active peptide


Species/Host

Mouse

Reactivity

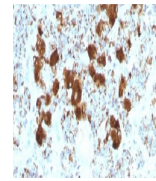
Human

Conjugation

Unconjugated

Tested Applications

IHC-P



IHC testing of FFPE human pituitary gland...

Immunogen

Amino acids 25-39 (NGAEDESAEAFPLEF) of Adrenocorticotrophic hormone (CLIP sequence) were used as the immunogen for this ACTH antibody.

Preservatives

0.2 mg/ml in 1X PBS with 0.1 mg/ml rAlbumin (US sourced) and 0.05% sodium azide

Storage

Store the ACTH antibody at 2-8°C (with azide) or aliquot and store at -20°C or colder (without azide).

Note

For research use only

Application notes

The concentration stated for each application is a general starting point. Variations in protocols, secondaries and substrates may require the ACTH antibody to be titered up or down for optimal performance.

Formula

0.2 mg/ml in 1X PBS with 0.1 mg/ml BSA (US sourced) and 0.05% sodium azide

Isotype

Mouse IgG1, kappa

Clonality

Monoclonal

Purity

Protein G affinity chromatography

Hazard Information

This ACTH antibody is available for research use only.

Entrez

[5443](#)

Dilution Range

Immunohistochemistry (FFPE): 1-2ug/ml for 30 min at RT

Expiration Date

12 months from date of receipt.