

---

## Product Datasheet

### Actin Antibody (pan muscle) (orb385922)

**Description**

Actin participates in many important cellular


**Species/Host**

Mouse

**Reactivity**

Human, Rat

**Conjugation**

Unconjugated

**Tested Applications**

IHC-P, WB

IHC testing of  
FFPE human  
leiomyosarcoma...

**Immunogen**

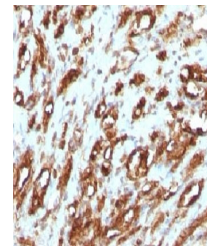
An amino acid sequence common among human muscle actins was used as the immunogen for the Muscle Actin antibody.

**Preservatives**

0.2 mg/ml in 1X PBS with 0.1 mg/ml rAlbumin (US sourced) and 0.05% sodium azide

**Storage**

Store the Muscle Actin antibody at 2-8°C (with azide) or aliquot and store at -20°C or colder (without azide).



IHC testing of  
FFPE human  
rhabdomyosarco...

**Note**

For research use only

**Application notes**

Titering of the Muscle Actin antibody may be required for optimal performance.1. The prediluted format is supplied in a dropper bottle and is optimized for use in IHC. After epitope retrieval step (if required), drip mAb solution onto the tissue section and incubate at RT for 30 min.



IHC testing of  
FFPE rat skeleton  
muscle ...

**Formula**

0.2 mg/ml in 1X PBS with 0.1 mg/ml BSA (US sourced) and 0.05% sodium azide

**Isotype**

Mouse IgG1, kappa

**Clonality**

Monoclonal

**Purity**

Protein G affinity chromatography

**Uniprot ID**

[P62736](#), [P68032](#), [P68133](#)

**Hazard Information**

This Muscle Actin antibody is available for research use only.

**Dilution Range**

Western blot: 0.5-1ug/ml, Immunohistochemistry (FFPE): 1-2ug/ml for 30 min at RT, Prediluted IHC only format: incubate for 30 min at RT (1)

**Expiration Date**

12 months from date of receipt.