
Product Datasheet

Cyclin B1 Antibody / CCNB1 (orb385903)

Description

Cyclin B1 (CCNB1) is a regulatory protein involved in

Species/Host

Mouse

Reactivity

Human

Conjugation

Unconjugated

Tested Applications

IHC-P

Immunogen

Recombinant human full-length protein was used as the immunogen for the Cyclin B1 antibody.

Preservatives

0.2 mg/ml in 1X PBS with 0.1 mg/ml rAlbumin (US sourced) and 0.05% sodium azide

Storage

Store the Cyclin B1 antibody at 2-8°C (with azide) or aliquot and store at -20°C or colder (without azide).

Note

For research use only

Application notes

Titering of the Cyclin B1 antibody may be required for optimal performance.1. FFPE testing requires sections to be boiled in pH6 10mM citrate buffer for 10-20 minutes, followed by cooling at RT for 20 minutes, prior to staining.2. The prediluted format is supplied in a dropper bottle and is optimized for use in IHC. After epitope retrieval step (if required), drip mAb solution onto the tissue section and incubate at RT for 30 min.

Formula

0.2 mg/ml in 1X PBS with 0.1 mg/ml BSA (US sourced) and 0.05% sodium azide

Isotype

Mouse IgG1, kappa

Clonality

Monoclonal

Purity

Protein G affinity chromatography

Uniprot ID

P14635

Hazard Information

This Cyclin B1 antibody is available for research use only.

Dilution Range

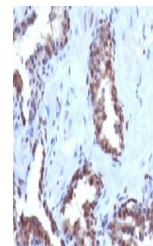
Immunohistochemistry (FFPE): 1-2ug/ml for 30 min at RT (1),Prediluted IHC only format: incubate for 30 min at RT (2)

Expiration Date

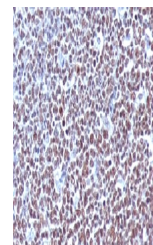
12 months from date of receipt.



IHC testing of FFPE human ovarian carcin...



IHC testing of FFPE human prostate carci...



IHC testing of FFPE human tonsil with Cy...