

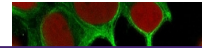
---

## Product Datasheet

### KRT19 Antibody / Cytokeratin 19 (orb385888)

**Description**

Cytokeratin 19 is a member of the keratin family.


**Species/Host**

Mouse

**Reactivity**

Human

**Conjugation**

Unconjugated

**Tested Applications**

FACS, IF, IHC-P, WB

**Immunogen**

Recombinant human KRT19 protein was used as the immunogen for the Keratin 19 antibody.

**Preservatives**

0.2 mg/ml in 1X PBS with 0.1 mg/ml rAlbumin (US sourced) and 0.05% sodium azide

**Storage**

Store the Keratin 19 antibody at 2-8°C (with azide) or aliquot and store at -20°C or colder (without azide).

**Note**

For research use only

**Application notes**

Titration of the Keratin 19 antibody may be required for optimal performance. The prediluted format is supplied in a dropper bottle and is optimized for use in IHC. After epitope retrieval step (if required), drip mAb solution onto the tissue section and incubate at RT for 30 min.

**Formula**

0.2 mg/ml in 1X PBS with 0.1 mg/ml BSA (US sourced) and 0.05% sodium azide

**Isotype**

Mouse IgG2a, kappa

**Clonality**

Monoclonal

**Purity**

Protein G affinity chromatography

**Uniprot ID**

**P08727**

**Hazard Information**

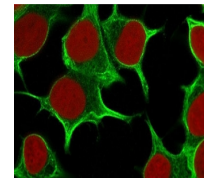
This Keratin 19 antibody is available for research use only.

**Dilution Range**

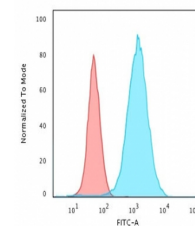
Western blot: 1-2ug/ml, Flow cytometry: 1-2ug/million cells, Immunofluorescence: 1-2ug/ml, Immunohistochemistry (FFPE): 1-2ug/ml for 30 min at RT, Prediluted IHC only format: incubate for 30 min at RT (1)

**Expiration Date**

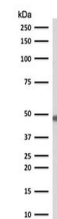
12 months from date of receipt.



Immunofluorescent staining of permeabilized cells



Flow cytometry testing of methanol-fixed cells



Western blot testing of human HepG2 anti-Keratin 19