
Product Datasheet

**Neurofilament Antibody (-Light) / NF-L / NEFL
(orb385869)**

Description

Neurofilaments are type IV intermediate filament



heavy...

Species/Host

Mouse

Reactivity

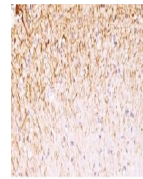
Human, Rat

Conjugation

Unconjugated

Tested Applications

IHC-P



IHC testing
of FFPE
human
cerebellum
wit...

Immunogen

Recombinant human neurofilament light chain protein was used as the immunogen for the Neurofilament antibody.

Preservatives

0.2 mg/ml in 1X PBS with 0.1 mg/ml rAlbumin (US sourced) and 0.05% sodium azide

Storage

Store the Neurofilament antibody at 2-8°C (with azide) or aliquot and store at -20°C or colder (without azide).

Note

For research use only

Application notes

Optimal dilution of the Neurofilament antibody should be determined by the researcher.1. The prediluted format is supplied in a dropper bottle and is optimized for use in IHC. After epitope retrieval step (if required), drip mAb solution onto the tissue section and incubate at RT for 30 min.

Formula

0.2 mg/ml in 1X PBS with 0.1 mg/ml BSA (US sourced) and 0.05% sodium azide

Isotype

Mouse IgG1, kappa

Clonality

Monoclonal

Purity

Protein G affinity chromatography

Uniprot ID

P07196

Hazard Information

This Neurofilament antibody is available for research use only.

Dilution Range

Immunohistochemistry (FFPE): 1-2ug/ml for 30 min at RT, Prediluted IHC only format: incubate for 30 min at RT (1)

Expiration Date

12 months from date of receipt.