
Product Datasheet

HLA-DRB1 Antibody (MHC II) (orb385861)

Description

HLA-DRB1 belongs to the HLA class II beta chain

Species/Host

Mouse

Reactivity

Human

Conjugation

Unconjugated

Tested Applications

FACS, IF, IHC-P, WB

Immunogen

Activated human peripheral blood mononuclear cells were used as the immunogen for the HLA-DRB1 antibody.

Preservatives

0.2 mg/ml in 1X PBS with 0.1 mg/ml rAlbumin (US sourced) and 0.05% sodium azide

Storage

Store the HLA-DRB1 antibody at 2-8°C (with azide) or aliquot and store at -20°C or colder (without azide).

Note

For research use only

Application notes

Optimal dilution of the HLA-DRB1 antibody should be determined by the researcher.1. The prediluted format is supplied in a dropper bottle and is optimized for use in IHC. After epitope retrieval step (if required), drip mAb solution onto the tissue section and incubate at RT for 30 min.

Formula

0.2 mg/ml in 1X PBS with 0.1 mg/ml BSA (US sourced) and 0.05% sodium azide

Isotype

Mouse IgG2b, kappa

Clonality

Monoclonal

Purity

Protein G affinity chromatography

Uniprot ID

P01911

Hazard Information

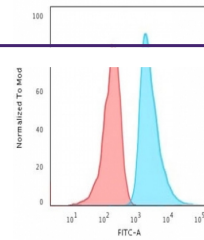
This HLA-DRB1 antibody is available for research use only.

Dilution Range

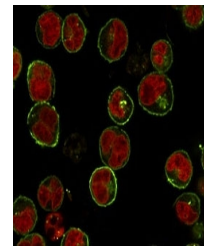
Flow Cytometry: 1-2ug/million cells in 0.1ml, Immunofluorescence: 2-4ug/ml, Western blot: 1-2ug/ml, Immunohistochemistry (FFPE): 0.5-1ug/ml for 30 min at RT, Prediluted IHC only format: incubate for 30 min at RT (1)

Expiration Date

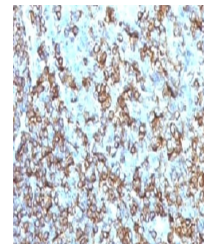
12 months from date of receipt.



FACS staining of Raji cells with HLA-DRB1...



Immunofluorescent staining of Raji cells...



IHC testing of FFPE human tonsil and HLA-DRB1...