
Product Datasheet

HSP27 Antibody / HSPB1 (orb385852)

Description

HSP27 is induced by environmental stress and

resista...

Species/Host

Mouse

Reactivity

Human

Conjugation

Unconjugated

Tested Applications

IF, IHC-P

Immunogen

Recombinant human HSPB1 protein was used as the immunogen for the HSP27 antibody.

Preservatives

0.2 mg/ml in 1X PBS with 0.1 mg/ml rAlbumin (US sourced) and 0.05% sodium azide

Storage

Store the HSP27 antibody at 2-8°C (with azide) or aliquot and store at -20°C or colder (without azide).

Note

For research use only

Application notes

Optimal dilution of the HSP27 antibody should be determined by the researcher.1. The prediluted format is supplied in a dropper bottle and is optimized for use in IHC. After epitope retrieval step (if required), drip mAb solution onto the tissue section and incubate at RT for 30 min.

Formula

0.2 mg/ml in 1X PBS with 0.1 mg/ml BSA (US sourced) and 0.05% sodium azide

Isotype

Mouse IgG1, kappa

Clonality

Monoclonal

Purity

Protein G affinity chromatography

Uniprot ID

[P04792](#)

Hazard Information

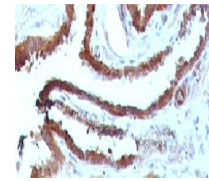
This HSP27 antibody is available for research use only.

Dilution Range

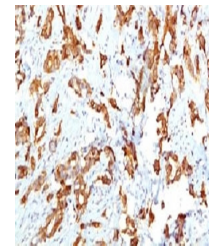
Immunofluorescence: 1-2ug/ml, Immunohistochemistry (FFPE): 1-2ug/ml for 30 min at RT, Prediluted IHC only format: incubate for 30 min at RT (1)

Expiration Date

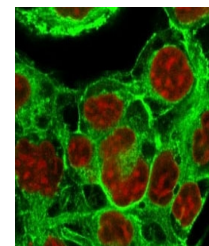
12 months from date of receipt.



IHC testing of FFPE human prostate carcinoma...



IHC testing of FFPE human breast carcinoma...



Immunofluorescent staining of PFA-fixed ...