
Product Datasheet

GnRH Receptor Antibody / GNRHR (orb385848)

Description

Receptor for gonadotropin releasing hormone



stimulate the...

Species/Host

Mouse

Reactivity

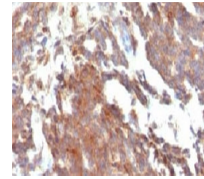
Human

Conjugation

Unconjugated

Tested Applications

IF, IHC-P



IHC testing of FFPE human ovarian carcin...

Immunogen

Recombinant full-length human protein was used as the immunogen for the GnRHR antibody.

Preservatives

0.2 mg/ml in 1X PBS with 0.1 mg/ml rAlbumin (US sourced) and 0.05% sodium azide

Storage

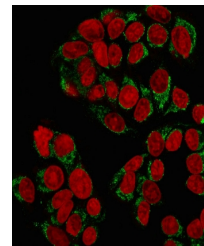
Store the GnRHR antibody at 2-8°C (with azide) or aliquot and store at -20°C or colder (without azide).

Note

For research use only

Application notes

Optimal dilution of the GnRHR antibody should be determined by the researcher.1. The prediluted format is supplied in a dropper bottle and is optimized for use in IHC. After epitope retrieval step (if required), drip mAb solution onto the tissue section and incubate at RT for 30 min.



Immunofluorescent staining of MeOH-fixed...

Formula

0.2 mg/ml in 1X PBS with 0.1 mg/ml BSA (US sourced) and 0.05% sodium azide

Isotype

Mouse IgG1, kappa

Clonality

Monoclonal

Purity

Protein G affinity chromatography

Uniprot ID
P30968
Hazard Information

This GnRHR antibody is available for research use only.

Dilution Range

Immunofluorescence: 1-2ug/ml, Immunohistochemistry (FFPE): 1-2ug/ml for 30 min at RT (1), Prediluted IHC only format: incubate for 30 min at RT (2)

Expiration Date

12 months from date of receipt.