
Product Datasheet

SUMO2/3 Antibody (orb385842)

Description

The small ubiquitin-related modifier (SUMO) proteins,

Species/Host

Mouse

Reactivity

Human

Conjugation

Unconjugated

Tested Applications

IF, IHC-P, WB

Immunogen

Recombinant human SUMO2 protein was used as the immunogen for this SUMO2/3 antibody. This antibody reacts with both SUMO2 and SUMO3.

Preservatives

0.2 mg/ml in 1X PBS with 0.1 mg/ml rAlbumin (US sourced) and 0.05% sodium azide

Storage

Store the SUMO2/3 antibody at 2-8°C (with azide) or aliquot and store at -20°C or colder (without azide).

Note

For research use only

Application notes

Titering of the SUMO2/3 antibody may be required for optimal performance.1. The prediluted format is supplied in a dropper bottle and is optimized for use in IHC. After epitope retrieval step (if required), drip mAb solution onto the tissue section and incubate at RT for 30 min.

Formula

0.2 mg/ml in 1X PBS with 0.1 mg/ml BSA (US sourced) and 0.05% sodium azide

Isotype

Mouse IgG1, kappa

Clonality

Monoclonal

Purity

Protein G purified

Hazard Information

This SUMO2/3 antibody is available for research use only.

Entrez

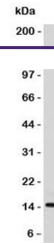
[6612](#), [6613](#)

Dilution Range

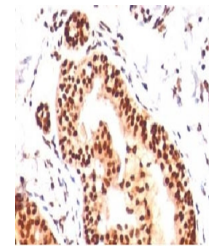
Immunofluorescence: 1-2ug/ml, Western blot: 1-2ug/ml, Immunohistochemistry (FFPE): 1-2ug/ml for 30 min at RT, Prediluted IHC only format: incubate for 30 min at RT (1)

Expiration Date

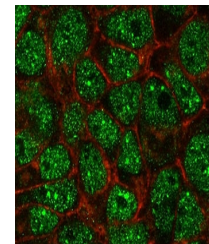
12 months from date of receipt.



Western blot testing of human HeLa lysat...



IHC analysis of human tonsil with SUMO2/...



Immunofluorescent testing of PFA-fixed h...