
Product Datasheet

p21 Antibody / CDKN1A (orb385829)

Description

p21WAF1 is a specific inhibitor of cdk s and a tumor

Species/Host

Mouse

Reactivity

Human

Conjugation

Unconjugated

Tested Applications

IF, IHC-P, WB

Immunogen

Recombinant full-length human protein was used as the immunogen for the p21 antibody. This antibody is not suitable for testing mouse and rat samples.

Preservatives

0.2 mg/ml in 1X PBS with 0.1 mg/ml rAlbumin (US sourced) and 0.05% sodium azide

Storage

Store the p21 antibody at 2-8°C (with azide) or aliquot and store at -20°C or colder (without azide).

Note

For research use only

Application notes

Optimal dilution of the p21 antibody to be determined by the researcher.1. The prediluted format is supplied in a dropper bottle and is optimized for use in IHC. After epitope retrieval step (if required), drip mAb solution onto the tissue section and incubate at RT for 30 min.

Formula

0.2 mg/ml in 1X PBS with 0.1 mg/ml BSA (US sourced) and 0.05% sodium azide

Isotype

Mouse IgG2a, kappa

Clonality

Monoclonal

Purity

Protein G affinity chromatography

Uniprot ID

P38936

Hazard Information

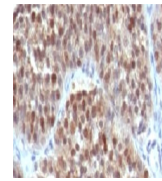
This p21 antibody is available for research use only.

Dilution Range

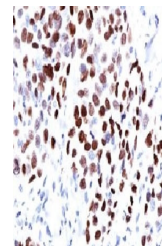
Immunofluorescence: 1-2ug/ml,Western blot: 1-2ug/ml,Immunohistochemistry (FFPE): 2-4ug/ml for 30 min at RT,Prediluted IHC only format: incubate for 30 min at RT (1)

Expiration Date

12 months from date of receipt.



IHC testing of human bladder carcinoma a...



IHC testing of human lung squamous cell ...



Western blot testing of human HeLa cell ...