

Product Datasheet

p27 Antibody / p27Kip1 (orb385809)

Description

This mAb recognizes a 27kDa protein, identified as the


Species/Host

Mouse

Reactivity

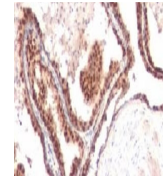
Human, Mouse, Rat

Conjugation

Unconjugated

Tested Applications

FACS, IF, IHC-P



IHC testing of FFPE human prostate cancer...

Immunogen

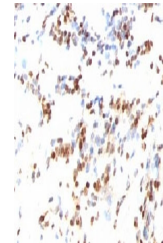
Recombinant human protein was used as the immunogen for the p27Kip1 antibody.

Preservatives

0.2 mg/ml in 1X PBS with 0.1 mg/ml rAlbumin (US sourced) and 0.05% sodium azide

Storage

Store the p27Kip1 antibody at 2-8°C (with azide) or aliquot and store at -20°C or colder (without azide).



IHC testing of FFPE human colon carcinoma...

Note

For research use only

Application notes

Optimal dilution of the p27Kip1 antibody to be determined by the researcher.1. The prediluted format is supplied in a dropper bottle and is optimized for use in IHC. After epitope retrieval step (if required), drip mAb solution onto the tissue section and incubate at RT for 30 min.

Formula

0.2 mg/ml in 1X PBS with 0.1 mg/ml BSA (US sourced) and 0.05% sodium azide

Isotype

Mouse IgG1, kappa

Clonality

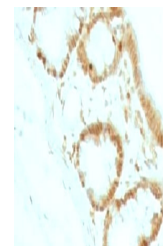
Monoclonal

Purity

Protein G affinity chromatography

Uniprot ID

P46527



IHC testing of FFPE rat colon tissue and...

Hazard Information

This p27Kip1 antibody is available for research use only.

Dilution Range

Flow Cytometry: 1-2ug/million cells in 0.1ml, Immunofluorescence: 1-2ug/ml, Immunohistochemistry (FFPE): 0.25-0.5ug/ml for 30 min at RT, Prediluted IHC only format: incubate for 30 min at RT (1)

Expiration Date

12 months from date of receipt.