
Product Datasheet

Ornithine Decarboxylase Antibody / ODC1 (orb385793)

Description

Ornithine Decarboxylase (ODC) is the rate-limiting

Species/Host

Mouse

Reactivity

Human

Conjugation

Unconjugated

Tested Applications

FACS, IHC-P, WB

Immunogen

Recombinant human protein was used as the immunogen for this ODC antibody.

Preservatives

0.2 mg/ml in 1X PBS with 0.1 mg/ml rAlbumin (US sourced) and 0.05% sodium azide

Storage

Store the ODC antibody at 2-8°C (with azide) or aliquot and store at -20°C or colder (without azide).

Note

For research use only

Application notes

Titering of the ODC antibody may be required for optimal performance.1. The prediluted format is supplied in a dropper bottle and is optimized for use in IHC. After epitope retrieval step (if required), drip mAb solution onto the tissue section and incubate at RT for 30 min.

Formula

0.2 mg/ml in 1X PBS with 0.1 mg/ml BSA (US sourced) and 0.05% sodium azide

Isotype

Mouse IgG1, kappa

Clonality

Monoclonal

Purity

Protein G affinity chromatography

Hazard Information

This ODC antibody is available for research use only.

Entrez

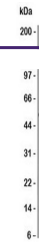
[4953](#)

Dilution Range

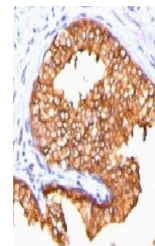
Flow cytometry: 1-2ug/million cells,Western blot: 1-2ug/ml,Immunohistochemistry (FFPE): 0.5-1ug/ml for 30 min at RT,Prediluted IHC only format: incubate for 30 min at RT (1)

Expiration Date

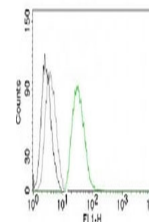
12 months from date of receipt.



Western blot testing of ODC antibody and...



IHC testing of FFPE human prostate carci...



Flow analysis of permeablized PC3 cells ...