
Product Datasheet

CD74 / CLIP Antibody (orb385766)

Description

Recognizes proteins of 33, 35 and 41kDa, which are

Species/Host

Mouse

Reactivity

Human

Conjugation

Unconjugated

Tested Applications

FACS, IF, IHC-P, WB

Immunogen

Recombinant full-length human protein was used as the immunogen for the CLIP antibody. Its epitope is localized in the extracellular domain of CLIP/CD74.

Preservatives

0.2 mg/ml in 1X PBS with 0.1 mg/ml rAlbumin (US sourced) and 0.05% sodium azide

Storage

Store the CLIP antibody at 2-8°C (with azide) or aliquot and store at -20°C or colder (without azide).

Note

For research use only

Application notes

Optimal dilution of the CLIP antibody should be determined by the researcher.1. Staining of formalin-fixed tissues requires boiling tissue sections in 10mM Citrate buffer, pH 6.0, for 10-20 min followed by cooling at RT for 20 min.2. The prediluted format is supplied in a dropper bottle and is optimized for use in IHC. After epitope retrieval step (if required), drip mAb solution onto the tissue section and incubate at RT for 30 min.

Formula

0.2 mg/ml in 1X PBS with 0.1 mg/ml BSA (US sourced) and 0.05% sodium azide

Isotype

Mouse IgG1, kappa

Clonality

Monoclonal

Purity

Protein G affinity chromatography

Uniprot ID

P04233

Hazard Information

This CLIP antibody is available for research use only.

Dilution Range

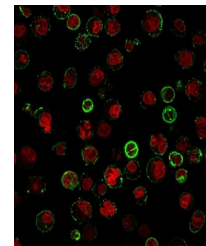
Flow cytometry: 1-2ug/million cells (methanol-fixed), Immunofluorescence: 1-2ug/ml, Immunohistochemistry (FFPE): 1-2ug/ml for 30 min at RT, Western blot: 1-2ug/ml

Expiration Date

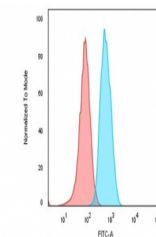
12 months from date of receipt.



Western blot testing of human Raji cell ...



Immunofluorescent staining of human Raji...



Flow cytometry testing of human Raji cel...