
Product Datasheet

POMC Antibody / ACTH / N-Terminal (orb385765)

Description

POMC (pro-opiomelanocortin or corticotropin-lipotropin)



Species/Host

Mouse

Reactivity

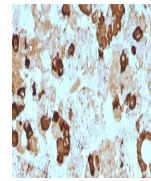
Human, Mouse, Rat

Conjugation

Unconjugated

Tested Applications

ELISA, FACS, IF, IHC-P



IHC staining of FFPE human pituitary gla...

Immunogen

An N-terminal peptide (within AA 1-24) from the Synacthen/ACTH region of human POMC was used as the immunogen for this POMC antibody.

Preservatives

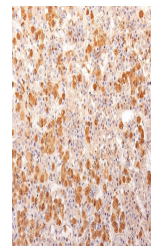
0.2 mg/ml in 1X PBS with 0.1 mg/ml rAlbumin (US sourced) and 0.05% sodium azide

Storage

Store the POMC antibody at 2-8°C (with azide) or aliquot and store at -20°C or colder (without azide).

Note

For research use only



IHC: Formalin-fixed, paraffin-embedded h...

Application notes

The optimal dilution of the ACTH / POMC antibody for each application should be determined by the researcher.1. View the recombinant version of this a href=../tds/recombinant-acth-antibody-mouse-monoclonal-r57-v3466>ACTH antibody.

Formula

0.2 mg/ml in 1X PBS with 0.1 mg/ml BSA (US sourced) and 0.05% sodium azide

Isotype

Mouse IgG1, kappa

Clonality

Monoclonal

Purity

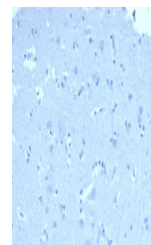
Protein G affinity chromatography

Uniprot ID

P01189

Hazard Information

This POMC antibody is available for research use only.



Negative control: IHC staining of FFPE h...

Dilution Range

ELISA (order BSA/sodium azide-free format for coating),Flow cytometry: 0.5-1ug/million cells,Immunofluorescence: 0.5-1ug/ml,Immunohistochemistry (FFPE): 0.5-1ug/ml for 30 min at RT

Expiration Date

12 months from date of receipt.