

---

## Product Datasheet

**Melanoma Cell Marker Antibody Cocktail (anti-MART-1 + gp100 + Tyrosinase) (orb385745)**

**Description**

This antibody cocktail recognizes three



1, Tyrosinase...

**Species/Host**

Mouse

**Reactivity**

Human

**Conjugation**

Unconjugated

**Tested Applications**

IHC-P, WB

**Immunogen**

Recombinant MART-1 protein (M2-7C10 & M2-9E3), recombinant tyrosinase protein (T311) and extract of pigmented melanoma metastases from lymph nodes (HMB45) were used as the immunogens for this Melanoma Cell Marker antibody cocktail.

**Preservatives**

0.2 mg/ml in 1X PBS with 0.1 mg/ml rAlbumin (US sourced) and 0.05% sodium azide

**Storage**

Store the Melanoma Cell Marker antibody cocktail at 2-8°C (with azide) or aliquot and store at -20°C or colder (without azide).

**Note**

For research use only

**Application notes**

The optimal dilution of the Melanoma Cell Marker antibody for each application should be determined by the researcher.1. Staining of formalin-fixed tissues is enhanced by boiling tissue sections in pH 9 10mM Tris with 1mM EDTA for 10-20 min followed by cooling at RT for 20 minutes.2. The prediluted format is supplied in a dropper bottle and is optimized for use in IHC. After epitope retrieval step (if required), drip mAb solution onto the tissue section and incubate at RT for 30 min.

**Formula**

0.2 mg/ml in 1X PBS with 0.1 mg/ml BSA (US sourced) and 0.05% sodium azide

**Isotype**

Mouse IgG1 + IgG2a + IgG2b + IgG2b

**Clonality**

Monoclonal

**Purity**

Protein G affinity chromatography

**Uniprot ID**

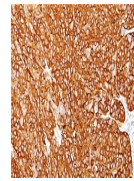
[P40967](#), [Q16655](#), [P14679](#)

**Hazard Information**

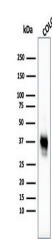
This Melanoma Cell Marker antibody cocktail is available for research use only.

**Dilution Range**

Western blot: 1-2ug/ml, Immunohistochemistry



IHC:  
Formalin-fixed,  
paraffin-embedded  
h...



Western  
blot testing  
of human  
COLO-38  
ce...