

---

## Product Datasheet

### MART-1 / Melan-A Antibody Cocktail (orb385744)

**Description**

This antibody recognizes a protein doublet of 20-22kDa,


**Species/Host**

Mouse

**Reactivity**

Human, Mouse, Rat

**Conjugation**

Unconjugated

**Tested Applications**

FACS, IF, IHC-P, WB

**Immunogen**

Recombinant human protein was used as the immunogens for this Melan-A antibody cocktail.

**Preservatives**

0.2 mg/ml in 1X PBS with 0.1 mg/ml rAlbumin (US sourced) and 0.05% sodium azide

**Storage**

Store the Melan-A antibody cocktail at 2-8°C (with azide) or aliquot and store at -20°C or colder (without azide).

**Note**

For research use only

**Application notes**

The optimal dilution of the Melan-A antibody for each application should be determined by the researcher.1. Staining of formalin-fixed tissues is enhanced by boiling tissue sections in pH 9 10mM Tris with 1mM EDTA for 10-20 min followed by cooling at RT for 20 minutes.2. The prediluted format is supplied in a dropper bottle and is optimized for use in IHC. After epitope retrieval step (if required), drip mAb solution onto the tissue section and incubate at RT for 30 min.

**Formula**

0.2 mg/ml in 1X PBS with 0.1 mg/ml BSA (US sourced) and 0.05% sodium azide

**Isotype**

Mouse IgG2b

**Clonality**

Monoclonal

**Purity**

Protein G affinity chromatography

**Uniprot ID**

**Q16655**

**Hazard Information**

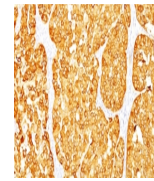
This Melan-A antibody cocktail is available for research use only.

**Dilution Range**

Flow cytometry: 1-2ug/million cells, Immunofluorescence: 1-2ug/ml, Western blot: 1-2ug/ml, Immunohistochemistry (FFPE): 1-2ug/ml /ml for 30 min at RT

**Expiration Date**

12 months from date of receipt.



IHC:  
Formalin-fixed,  
paraffin-embedded  
h...