

---

## Product Datasheet

### HER2 Antibody / ErbB2 (orb385665)

**Description**

ErbB2, also called HER2, is a member of the EGFR

**Species/Host**

Mouse

**Reactivity**

Human

**Conjugation**

Unconjugated

**Tested Applications**

ELISA, FACS, IF

**Immunogen**

Recombinant human protein (intracellular domain) was used as the immunogen for this HER-2 antibody. (2)

**Preservatives**

0.2 mg/ml in 1X PBS with 0.1 mg/ml rAlbumin (US sourced) and 0.05% sodium azide

**Storage**

Store the HER-2 antibody at 2-8°C.

**Note**

For research use only

**Application notes**

The concentration stated for each application is a general starting point. Variations in protocols, secondaries and substrates may require the HER-2 antibody to be titrated up or down for optimal performance.1. FFPE staining requires boiling tissue sections in 10mM Citrate buffer, pH 6, for 10-20 min followed by cooling at RT for 20 min.2. This HER2 antibody is specific to the intracellular region of the protein.

**Formula**

0.2 mg/ml in 1X PBS with 0.1 mg/ml BSA (US sourced) and 0.05% sodium azide

**Isotype**

Mouse IgG1, kappa

**Clonality**

Monoclonal

**Purity**

Protein G affinity chromatography

**Hazard Information**

This HER-2 antibody is available for research use only.

**Entrez**

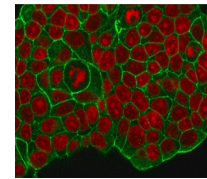
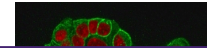
[2064](#)

**Dilution Range**

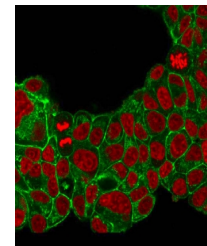
ELISA (order BSA/sodium azide-free format for coating),Flow cytometry: 1-2ug/million cells,Immunofluorescence: 1-2ug/ml

**Expiration Date**

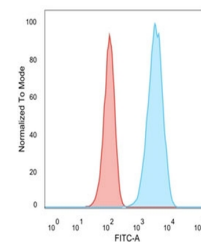
12 months from date of receipt.



Immunofluorescent staining of MeOH-fixed...



Immunofluorescent staining of PFA-fixed ...



Flow cytometry testing of permeabilized ...