

---

## Product Datasheet

### MUC1 Antibody / Mucin-1 (orb385659)

**Description**

This antibody recognizes proteins in MW range of 265-


**Species/Host**

Mouse

**Reactivity**

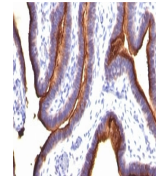
Human

**Conjugation**

Unconjugated

**Tested Applications**

IHC-P



Formalin-fixed, paraffin-embedded human ...

**Immunogen**

Human milk fat globule membranes were used as the immunogen for this EMA antibody.

**Preservatives**

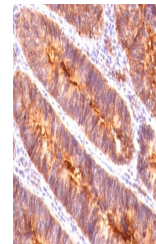
0.2 mg/ml in 1X PBS with 0.1 mg/ml rAlbumin (US sourced) and 0.05% sodium azide

**Storage**

Store the EMA antibody at 2-8°C (with azide) or aliquot and store at -20°C or colder (without azide).

**Note**

For research use only



Formalin-fixed, paraffin-embedded human ...

**Application notes**

The concentration stated for each application is a general starting point. Variations in protocols, secondaries and substrates may require the EMA antibody to be titrated up or down for optimal performance.1. HIER: boil sections in pH 9 10mM Tris with 1mM EDTA for 10-20 min followed by cooling at RT for 10-20 min.2. The prediluted format is supplied in a dropper bottle and is optimized for use in IHC. After epitope retrieval step (if required), drip mAb solution onto the tissue section and incubate at RT for 30 min.

**Formula**

0.2 mg/ml in 1X PBS with 0.1 mg/ml BSA (US sourced) and 0.05% sodium azide

**Isotype**

Mouse IgG1, kappa

**Clonality**

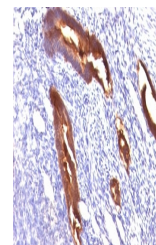
Monoclonal

**Purity**

Protein G affinity chromatography

**Hazard Information**

This EMA antibody is available for research use only.



Formalin-fixed, paraffin-embedded human ...

**Entrez**

[4582](#)

**Dilution Range**

Immunohistochemistry (FFPE): 1-2ug/ml for 30 min at RT

**Expiration Date**

12 months from date of receipt.