
Product Datasheet

MUC1 Antibody / Mucin-1 (orb385658)

Description

This Epithelial Membrane Antigen / EMA antibody, also

Species/Host

Mouse

Reactivity

Human

Conjugation

Unconjugated

Tested Applications

IHC-P, WB

Immunogen

Human milk fat globule membranes were used as the immunogen for this Epithelial Marker Antigen antibody.

Preservatives

0.2 mg/ml in 1X PBS with 0.1 mg/ml rAlbumin (US sourced) and 0.05% sodium azide

Storage

Store the Epithelial marker antigen antibody at 2-8°C (with azide) or aliquot and store at -20°C or colder (without azide).

Note

For research use only

Application notes

The concentration stated for each application is a general starting point. Variations in protocols, secondaries and substrates may require the Epithelial Marker Antigen antibody to be titered up or down for optimal performance.1. FFPE staining REQUIRES boiling sections in pH 9 10mM Tris with 1mM EDTA for 10-20 min followed by cooling at RT for 10-20 min.2. The prediluted format is supplied in a dropper bottle and is optimized for use in IHC. After epitope retrieval step (if required), drip mAb solution onto the tissue section and incubate at RT for 30 min.

Formula

0.2 mg/ml in 1X PBS with 0.1 mg/ml BSA (US sourced) and 0.05% sodium azide

Isotype

Mouse IgG1, kappa

Clonality

Monoclonal

Purity

Protein G affinity chromatography

Hazard Information

This Epithelial Marker Antigen antibody is available for research use only.

Entrez

4582

Dilution Range

Immunohistochemistry (FFPE): 1-2ug/ml for 30 min at RT, Western blot: 1-2ug/ml

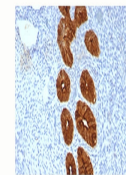
Expiration Date

12 months from date of receipt.

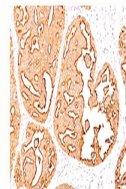
kb



Western blot testing of human MCF7 cell ...



Epithelial Marker Antigen antibody IHC t...



Epithelial Marker Antigen antibody IHC t...