

---

## Product Datasheet

### PSA / Prostate Specific Antigen Antibody (orb385656)

**Description**

Prostate specific antigen / PSA is a chymotrypsin-like

**Species/Host**

Mouse

**Reactivity**

Human

**Conjugation**

Unconjugated

**Tested Applications**

IHC-P

**Immunogen**

Full length human recombinant protein was used as the immunogen for this PSA antibody.

**Preservatives**

0.2 mg/ml in 1X PBS with 0.1 mg/ml rAlbumin (US sourced) and 0.05% sodium azide

**Storage**

Store the PSA antibody at 2-8°C (with azide) or aliquot and store at -20°C or colder (without azide).

**Note**

For research use only

**Application notes**

Variations in protocols, secondaries and substrates may require the PSA antibody to be titered up or down for optimal performance.1. Staining of formalin-fixed tissues requires boiling tissue sections in 10mM Citrate buffer, pH 6.0, for 10-20 min followed by cooling at RT for 20 minutes.2. The prediluted format is supplied in a dropper bottle and is optimized for use in IHC. After epitope retrieval step (if required), drip mAb solution onto the tissue section and incubate at RT for 30 min.

**Formula**

0.2 mg/ml in 1X PBS with 0.1 mg/ml BSA (US sourced) and 0.05% sodium azide

**Isotype**

Mouse IgG1, kappa

**Clonality**

Monoclonal

**Purity**

Protein G purified

**Hazard Information**

This PSA antibody is available for research use only.

**Entrez**
[354](#)
**Dilution Range**

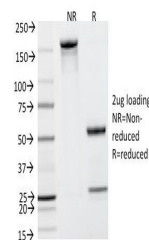
Immunohistochemistry (FFPE ): 1-2ug/ml for 30 min at RT

**Expiration Date**

12 months from date of receipt.



PSA antibody IHC testing of formalin-par...



SDS-PAGE Analysis of Purified, BSA-Free ...