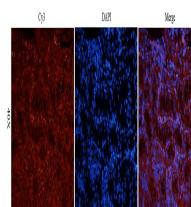


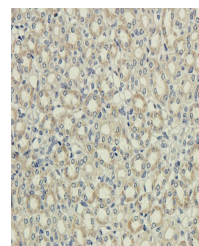
Product Datasheet

PAR2 antibody (orb385619)

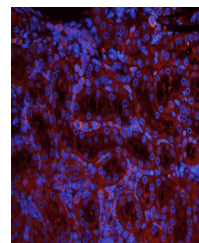
Description	PAR2 antibody
Species/Host	Rabbit
Reactivity	Guinea pig, Human, Mouse, Rat
Conjugation	Unconjugated
Tested Applications	ICC, IF, IHC-P, WB
Immunogen	KLH conjugated synthetic peptide derived from human PAR2. Please contact us for the exact immunogen sequence. The peptide is available as orb13215.
Target	PAR2
Form/Appearance	10 mM PBS, 0.02% sodium azide
Concentration	- 100 µg (in 200 µl): 0.5 mg/ml- 200 µg (in 400 µl): 0.5 mg/ml
Storage	Store at 4°C for up to two weeks. For long term storage, aliquot and store at -20°C, avoid freeze/thaw cycles.
Note	For research use only
Isotype	IgG
Clonality	Polyclonal
Purity	Polyclonal antibodies are purified by peptide affinity chromatography
MW	44 kDa
Dilution Range	IHC-P: 1:50-400, WB: 1:200-1500, IF/ICC: 1:50-400
Expiration Date	12 months from date of receipt.



IF analysis of guinea pig kidney tissue ...



Immunohistochemical staining of paraffin...



IF analysis of guinea pig kidney tissue ...