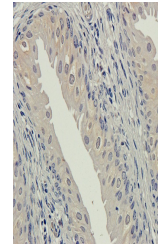


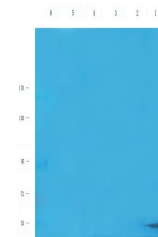
Product Datasheet

FOXO3A antibody (orb385614)

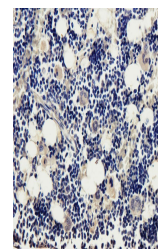
Description	FOXO3A antibody
Species/Host	Rabbit
Reactivity	Guinea pig, Human, Mouse, Rat
Conjugation	Unconjugated
Tested Applications	IHC-P, WB
Immunogen	KLH conjugated synthetic peptide derived from human FOXO3A. Please contact us for the exact immunogen sequence. The peptide is available as orb13199.
Target	FOXO3A
Form/Appearance	10 mM PBS, 0.02% sodium azide
Concentration	- 100 µg (in 200 µl): 0.5 mg/ml- 200 µg (in 400 µl): 0.5 mg/ml
Storage	Store at 4°C for up to two weeks. For long term storage, aliquot and store at -20°C, avoid freeze/thaw cycles.
Note	For research use only
Isotype	IgG
Clonality	Polyclonal
Purity	Polyclonal antibodies are purified by peptide affinity chromatography
MW	71 kDa
Dilution Range	IHC-P: 1:50-200, WB: 1:200-1000
Expiration Date	12 months from date of receipt.



IHC-P staining of guinea pig bladder tis...



Western blot analysis of rat bone marrow...



IHC-P image of rat bone marrow tissue us...