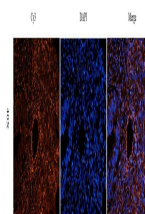


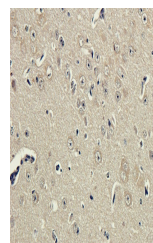
Product Datasheet

FAAH antibody (orb385462)

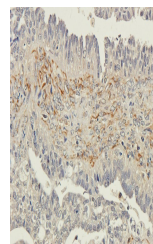
Description	FAAH antibody
Species/Host	Rabbit
Reactivity	Guinea pig, Human, Mouse, Rat
Conjugation	Unconjugated
Tested Applications	ICC, IF, IHC-P, WB
Immunogen	KLH conjugated synthetic peptide derived from human FAAH. Please contact us for the exact immunogen sequence. The peptide is available as orb13160.
Target	FAAH. This antibody has specificity with FAAH.
Form/Appearance	10 mM PBS, 0.02% sodium azide
Concentration	- 100 µg (in 200 µl): 0.5 mg/ml- 200 µg (in 400 µl): 0.5 mg/ml
Storage	Store at 4°C for up to two weeks. For long term storage, aliquot and store at -20°C, avoid freeze/thaw cycles.
Note	For research use only
Isotype	IgG
Clonality	Polyclonal
Purity	Polyclonal antibodies are purified by peptide affinity chromatography
MW	63 kDa
Uniprot ID	P97612 , O00519 , O08914
NCBI	001432 , 001441
Entrez	2166
Dilution Range	IHC-P: 1:100-500, IF/ICC: 1:100-500, WB: 1:200-1500
Expiration Date	12 months from date of receipt.



IF analysis of human ovarian cancer tiss...



IHC-P staining of guinea pig brain tissu...



IHC-P image of human ovarian cancer tiss...