

Product Datasheet

ACAT2 antibody (orb385458)

Description

ACAT2 antibody

Species/Host

Rabbit

Reactivity

Human, Mouse, Porcine, Rat

Conjugation

Unconjugated

Tested Applications

IHC-P, WB

Immunogen

KLH conjugated synthetic peptide derived from human ACAT2. Please contact us for the exact immunogen sequence. The peptide is available as orb13131.

Target

ACAT2. This antibody has specificity with ACAT2.

Form/Appearance

10 mM PBS, 0.02% sodium azide

Concentration

- 100 µg (in 200 µl): 0.5 mg/ml- 200 µg (in 400 µl): 0.5 mg/ml

Storage

Store at 4°C for up to two weeks. For long term storage, aliquot and store at -20°C, avoid freeze/thaw cycles.

Note

For research use only

Isotype

IgG

Clonality

Polyclonal

Purity

Polyclonal antibodies are purified by peptide affinity chromatography

MW

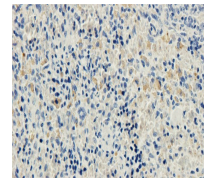
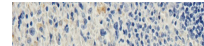
60 kDa

Uniprot ID
[Q7TQM4](#), [O88908](#), [O75908](#)
NCBI
[003578](#), [003569](#)
Entrez
[8435](#)
Dilution Range

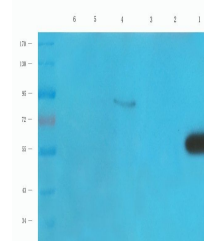
IHC-P: 1:50-300, WB: 1:200-2000

Expiration Date

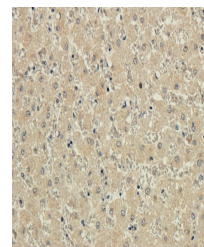
12 months from date of receipt.



Immunohistochemical staining of rat spleen...



Western blot analysis of mouse liver (la...



Immunohistochemical staining of pig live...