
Product Datasheet

Cpt1a antibody (orb385457)

Description

Cpt1a antibody

Species/Host

Rabbit

Reactivity

Human, Mouse, Rat

Conjugation

Unconjugated

Tested Applications

ICC, IF, IHC-P, WB

Immunogen

KLH conjugated synthetic peptide derived from human Cpt1a. Please contact us for the exact immunogen sequence. The peptide is available as orb13117.

Target

Cpt1a. This antibody has specificity with Cpt1a.

Form/Appearance

10 mM PBS, 0.02% sodium azide

Concentration

- 100 µg (in 200 µl): 0.5 mg/ml- 200 µg (in 400 µl): 0.5 mg/ml

Storage

Store at 4°C for up to two weeks. For long term storage, aliquot and store at -20°C, avoid freeze/thaw cycles.

Note

For research use only

Isotype

IgG

Clonality

Polyclonal

Purity

Polyclonal antibodies are purified by peptide affinity chromatography

MW

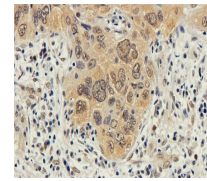
88 kDa

Uniprot ID
[P97742](#), [P32198](#), [P50416](#)
NCBI
[001031847](#), [001027017](#)
Entrez
[1374](#)
Dilution Range

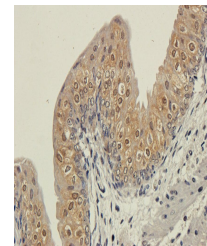
IHC-P: 1:100-500, IF/ICC: 1:100-500, WB: 1:200-1500

Expiration Date

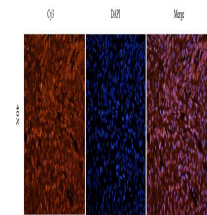
12 months from date of receipt.



IHC-P staining of human lung cancer tiss...



Immunohistochemical staining of human ov...



Immunofluorescence image of human ovaria...