
Product Datasheet

Tyrosine Hydroxylase antibody (orb385456)

Description

Tyrosine Hydroxylase antibody


Species/Host

Rabbit

Reactivity

Guinea pig, Human, Mouse, Rat

Conjugation

Unconjugated

Tested

ICC, IF, IHC-P, WB

Applications

IHC-P staining of guinea pig brain tissue...

Immunogen

KLH conjugated synthetic peptide derived from human Tyrosine Hydroxylase. Please contact us for the exact immunogen sequence. The peptide is available as orb13111.

Target

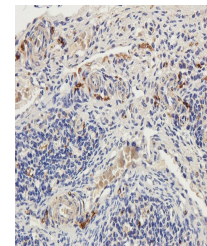
Tyrosine Hydroxylase. This antibody has specificity with Tyrosine Hydroxylase.

Form/Appearance

10 mM PBS, 0.02% sodium azide

Concentration

- 100 µg (in 200 µl): 0.5 mg/ml- 200 µg (in 400 µl): 0.5 mg/ml



Immunohistochemical staining of guinea p...

Storage

Store at 4°C for up to two weeks. For long term storage, aliquot and store at -20°C, avoid freeze/thaw cycles.

Note

For research use only

Isotype

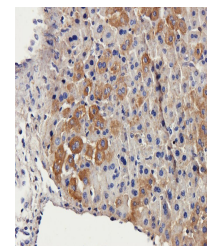
IgG

Clonality

Polyclonal

Purity

Polyclonal antibodies are purified by peptide affinity chromatography



Immunohistochemical staining of mouse ad...

MW

59 kDa

Uniprot ID
[P24529](#), [P07101](#), [P04177](#)
NCBI
[000351](#), [000360](#)
Entrez
[7054](#)
Dilution Range

IHC-P: 1:100-800, IF/ICC: 1:100-800, WB: 1:200-1500

Expiration Date

12 months from date of receipt.