

Product Datasheet

CLDN3 antibody (orb385452)

Description

CLDN3 antibody

Species/Host

Rabbit

Reactivity

Guinea pig, Human, Mouse, Rat

Conjugation

Unconjugated

Tested

IHC-P, WB

Applications
Immunogen

KLH conjugated synthetic peptide derived from human CLDN3. Please contact us for the exact immunogen sequence. The peptide is available as orb13103.

Target

CLDN3. This antibody has specificity with CLDN3.

Form/Appearance

10 mM PBS, 0.02% sodium azide

Concentration

- 100 µg (in 200 µl): 0.5 mg/ml- 200 µg (in 400 µl): 0.5 mg/ml

Storage

Store at 4°C for up to two weeks. For long term storage, aliquot and store at -20°C, avoid freeze/thaw cycles.

Note

For research use only

Isotype

IgG

Clonality

Polyclonal

Purity

Polyclonal antibodies are purified by peptide affinity chromatography

MW

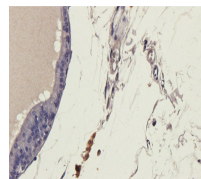
23 kDa

Uniprot ID
[O15551](#), [Q63400](#), [Q9Z0G9](#)
NCBI
[001297](#), [001306](#)
Entrez
[1365](#)
Dilution Range

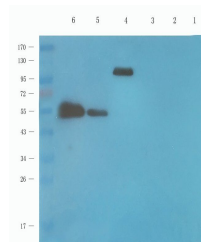
IHC-P: 1:100-500, WB: 1:200-1000

Expiration Date

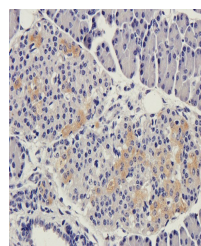
12 months from date of receipt.



Immunohistochemical staining of rat pros...



WB analysis of rat colon (lane 1), rat s...



Immunohistochemical staining of paraffin...