
Product Datasheet

CD169 Sialoadhesin antibody (orb385451)

Description

CD169 Sialoadhesin antibody

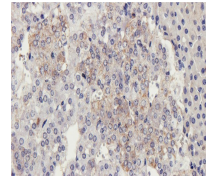


Species/Host

Rabbit

Reactivity

Guinea pig, Human, Mouse, Rat



Immunohistochemical staining of paraffin...

Conjugation

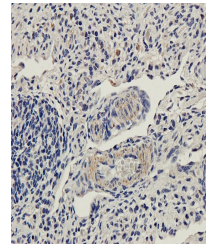
Unconjugated

Tested Applications

ICC, IF, IHC-P, WB

Immunogen

KLH conjugated synthetic peptide derived from human CD169 Sialoadhesin. Please contact us for the exact immunogen sequence. The peptide is available as orb13102.



IHC-P staining of guinea pig ovary tissue...

Target

CD169 Sialoadhesin. This antibody has specificity with CD169 Sialoadhesin.

Form/Appearance

10 mM PBS, 0.02% sodium azide

Concentration

- 100 µg (in 200 µl): 0.5 mg/ml- 200 µg (in 400 µl): 0.5 mg/ml

Storage

Store at 4°C for up to two weeks. For long term storage, aliquot and store at -20°C, avoid freeze/thaw cycles.

Note

For research use only

Isotype

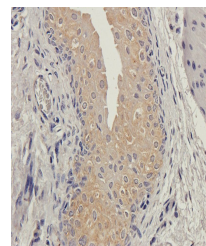
IgG

Clonality

Polyclonal

Purity

Polyclonal antibodies are purified by peptide affinity chromatography



IHC-P image of guinea pig bladder tissue...

MW

183 kDa

Uniprot ID

[Q62230](#), [Q9BZZ2](#)

NCBI

[075556](#), [023068](#)

Entrez

[6614](#)

Dilution Range

IHC-P: 1:100-500, IF/ICC: 1:100-500, WB: 1:200-1000

Expiration Date

12 months from date of receipt.