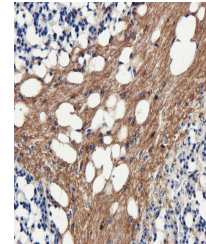


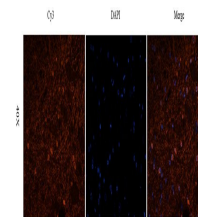
Product Datasheet

CD57 antibody (orb385450)

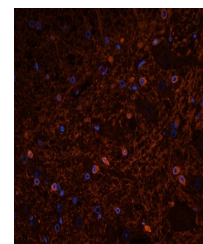
Description	CD57 antibody
Species/Host	Rabbit
Reactivity	Guinea pig, Human, Mouse, Rat
Conjugation	Unconjugated
Tested Applications	ICC, IF, IHC-P, WB
Immunogen	KLH conjugated synthetic peptide derived from human CD57. Please contact us for the exact immunogen sequence. The peptide is available as orb13099.
Target	CD57. This antibody has specificity with CD57.
Form/Appearance	10 mM PBS, 0.02% sodium azide
Concentration	- 100 µg (in 200 µl): 0.5 mg/ml- 200 µg (in 400 µl): 0.5 mg/ml
Storage	Store at 4°C for up to two weeks. For long term storage, aliquot and store at -20°C, avoid freeze/thaw cycles.
Note	For research use only
Isotype	IgG
Clonality	Polyclonal
Purity	Polyclonal antibodies are purified by peptide affinity chromatography
MW	38 kDa
Uniprot ID	O35789 , Q9P2W7 , Q9CW73
Entrez	27087
Dilution Range	IHC-P: 1:100-500, IF/ICC: 1:100-500, WB: 1:200-1000
Expiration Date	12 months from date of receipt.



IHC-P image of guinea pig cerebellum tis...



IF image of rat spinal cord tissue using...



Immunofluorescence analysis of rat spina...