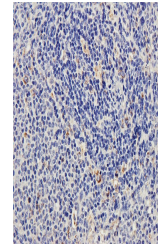


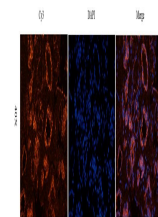
Product Datasheet

CD170 antibody (orb385449)

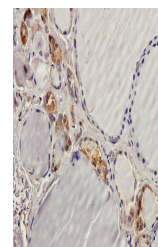
Description	CD170 antibody
Species/Host	Rabbit
Reactivity	Guinea pig, Human, Mouse, Rat
Conjugation	Unconjugated
Tested Applications	ICC, IF, IHC-P, WB
Immunogen	KLH conjugated synthetic peptide derived from human CD170. Please contact us for the exact immunogen sequence. The peptide is available as orb13096.
Target	CD170. This antibody has specificity with CD170.
Form/Appearance	10 mM PBS, 0.02% sodium azide
Concentration	- 100 µg (in 200 µl): 0.5 mg/ml- 200 µg (in 400 µl): 0.5 mg/ml
Storage	Store at 4°C for up to two weeks. For long term storage, aliquot and store at -20°C, avoid freeze/thaw cycles.
Note	For research use only
Isotype	IgG
Clonality	Polyclonal
Purity	Polyclonal antibodies are purified by peptide affinity chromatography
MW	61 kDa
Uniprot ID	D3Z9T4 , Q920G3 , O15389
NCBI	003830 , 003821
Entrez	8778
Dilution Range	IHC-P: 1:100-500, IF/ICC: 1:100-500, WB: 1:200-1000
Expiration Date	12 months from date of receipt.



IHC-P staining of guinea pig spleen tiss...



IF analysis of human thyroid cancer tiss...



IHC-P image of human thyroid cancer tiss...