
Product Datasheet

CD168 antibody (orb385448)

Description

CD168 antibody

Species/Host

Rabbit

Reactivity

Guinea pig, Human, Mouse, Rat

Conjugation

Unconjugated

Tested Applications

IHC-P, WB

Immunogen

KLH conjugated synthetic peptide derived from human CD168. Please contact us for the exact immunogen sequence. The peptide is available as orb13090.

Target

CD168. This antibody has specificity with CD168.

Form/Appearance

10 mM PBS, 0.02% sodium azide

Concentration

- 100 µg (in 200 µl): 0.5 mg/ml- 200 µg (in 400 µl): 0.5 mg/ml

Storage

Store at 4°C for up to two weeks. For long term storage, aliquot and store at -20°C, avoid freeze/thaw cycles.

Note

For research use only

Isotype

IgG

Clonality

Polyclonal

Purity

Polyclonal antibodies are purified by peptide affinity chromatography

MW

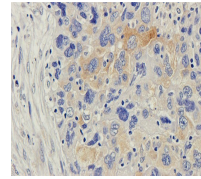
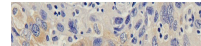
84 kDa

Uniprot ID
[O75330](#), [P97779](#), [Q00547](#)
NCBI
[001136028](#), [001142556](#)
Entrez
[3161](#)
Dilution Range

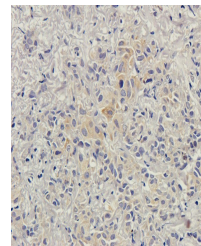
IHC-P: 1:100-600, WB: 1:200-1000

Expiration Date

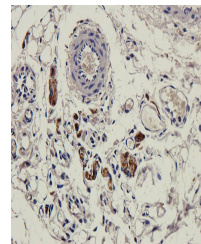
12 months from date of receipt.



IHC-P staining of human lung cancer tiss...



Immunohistochemical staining of human br...



IHC-P staining of guinea pig ovary tissu...