
Product Datasheet

CD166 antibody (orb385447)

Description

CD166 antibody

Species/Host

Rabbit

Reactivity

Guinea pig, Human, Mouse, Rat

Conjugation

Unconjugated

Tested

IHC-P, WB

Applications
Immunogen

KLH conjugated synthetic peptide derived from human CD166. Please contact us for the exact immunogen sequence. The peptide is available as orb13088.

Target

CD166. This antibody has specificity with CD166.

Form/Appearance

10 mM PBS, 0.02% sodium azide

Concentration

- 100 µg (in 200 µl): 0.5 mg/ml- 200 µg (in 400 µl): 0.5 mg/ml

Storage

Store at 4°C for up to two weeks. For long term storage, aliquot and store at -20°C, avoid freeze/thaw cycles.

Note

For research use only

Isotype

IgG

Clonality

Polyclonal

Purity

Polyclonal antibodies are purified by peptide affinity chromatography

MW

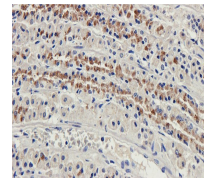
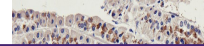
65 kDa

Uniprot ID
[Q61490](#), [O35112](#), [Q13740](#)
NCBI
[001243280](#), [001230209](#)
Entrez
[214](#)
Dilution Range

IHC-P: 1:100-800, WB: 1:200-1000

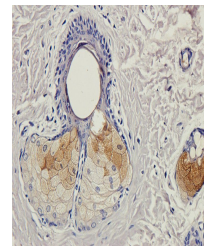
Expiration Date

12 months from date of receipt.

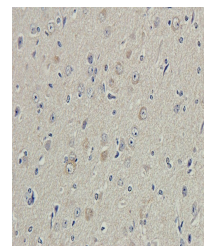


IHC-P image of rat stomach tissue using

...



Immunohistochemical staining of rat skin...



IHC-P staining of guinea pig brain tissue...