
Product Datasheet

CD151 antibody (orb385446)

Description

CD151 antibody

Species/Host

Rabbit

Reactivity

Human, Mouse, Rat

Conjugation

Unconjugated

Tested Applications

ICC, IF, IHC-P, WB

Immunogen

KLH conjugated synthetic peptide derived from human CD151. Please contact us for the exact immunogen sequence. The peptide is available as orb13087.

Target

CD151. This antibody has specificity with CD151.

Form/Appearance

10 mM PBS, 0.02% sodium azide

Concentration

- 100 µg (in 200 µl): 0.5 mg/ml- 200 µg (in 400 µl): 0.5 mg/ml

Storage

Store at 4°C for up to two weeks. For long term storage, aliquot and store at -20°C, avoid freeze/thaw cycles.

Note

For research use only

Isotype

IgG

Clonality

Polyclonal

Purity

Polyclonal antibodies are purified by peptide affinity chromatography

MW

28 kDa

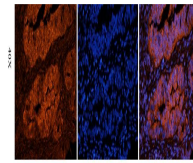
Uniprot ID
[P48509](#), [Q9QZA6](#), [O35566](#)
NCBI
[001039490](#), [001034579](#)
Entrez
[977](#)
Dilution Range

IHC-P: 1:100-500, IF/ICC: 1:100-500, WB: 1:200-1000

Expiration Date

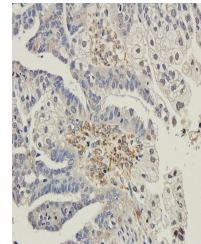
12 months from date of receipt.

IgG1 IgG2 IgG3

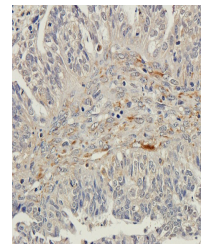


IF image of human ovarian cancer tissue

...



IHC-P image of human ovarian cancer tiss...



Immunohistochemical staining of human ov...