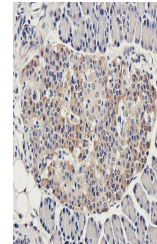


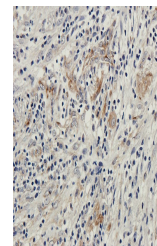
Product Datasheet

ZDHHC2 antibody (orb385443)

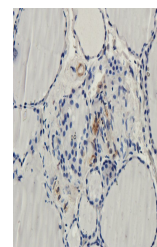
Description	ZDHHC2 antibody
Species/Host	Rabbit
Reactivity	Guinea pig, Human, Mouse, Rat
Conjugation	Unconjugated
Tested Applications	ICC, IF, IHC-P, WB
Immunogen	KLH conjugated synthetic peptide derived from human ZDHHC2. Please contact us for the exact immunogen sequence. The peptide is available as orb13078.
Target	ZDHHC2. This antibody has specificity with ZDHHC2.
Form/Appearance	10 mM PBS, 0.02% sodium azide
Concentration	- 100 µg (in 200 µl): 0.5 mg/ml- 200 µg (in 400 µl): 0.5 mg/ml
Storage	Store at 4°C for up to two weeks. For long term storage, aliquot and store at -20°C, avoid freeze/thaw cycles.
Note	For research use only
Isotype	IgG
Clonality	Polyclonal
Purity	Polyclonal antibodies are purified by peptide affinity chromatography
MW	42 kDa
Uniprot ID	P59267 , Q9JKR5 , Q9UIJ5
NCBI	016353 , 057437
Entrez	51201
Dilution Range	IHC-P: 1:100-600, IF/ICC: 1:100-600, WB: 1:200-1500
Expiration Date	12 months from date of receipt.



IHC-P image of guinea pig pancreas tissue...



IHC-P image of human lung cancer tissue ...



IHC-P image of human thyroid cancer tissue...