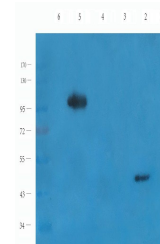


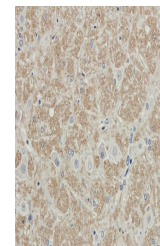
Product Datasheet

RHOT1 antibody (orb385441)

Description	RHOT1 antibody
Species/Host	Rabbit
Reactivity	Human, Mouse, Rat
Conjugation	Unconjugated
Tested Applications	IHC-P, WB
Immunogen	KLH conjugated synthetic peptide derived from human RHOT1. Please contact us for the exact immunogen sequence. The peptide is available as orb13072.
Target	RHOT1. This antibody has specificity with RHOT1.
Form/Appearance	10 mM PBS, 0.02% sodium azide
Concentration	- 100 µg (in 200 µl): 0.5 mg/ml- 200 µg (in 400 µl): 0.5 mg/ml
Storage	Store at 4°C for up to two weeks. For long term storage, aliquot and store at -20°C, avoid freeze/thaw cycles.
Note	For research use only
Isotype	IgG
Clonality	Polyclonal
Purity	Polyclonal antibodies are purified by peptide affinity chromatography
MW	71 kDa
Uniprot ID	Q6QI24 , Q8BG51 , Q8IXI2
Entrez	55288
Dilution Range	IHC-P: 1:50-500, WB: 1:200-1500
Expiration Date	12 months from date of receipt.



Western blot analysis of mouse brain (la...



IHC-P image of rat brain tissue using RH...