
Product Datasheet

COL17A1 antibody (orb385440)

Description

COL17A1 antibody

Species/Host

Rabbit

Reactivity

Human, Mouse, Rat

Conjugation

Unconjugated

Tested Applications

ICC, IF, IHC-P, WB

Immunogen

KLH conjugated synthetic peptide derived from human COL17A1. Please contact us for the exact immunogen sequence. The peptide is available as orb13071.

Target

COL17A1. This antibody has specificity with COL17A1.

Form/Appearance

10 mM PBS, 0.02% sodium azide

Concentration

- 100 µg (in 200 µl): 0.5 mg/ml- 200 µg (in 400 µl): 0.5 mg/ml

Storage

Maintain refrigerated at 2-8°C for up to 2 weeks. For long term storage store at -20°C in small aliquots to prevent freeze-thaw cycles.

Note

For research use only

Isotype

IgG

Clonality

Polyclonal

Purity

Polyclonal antibodies are purified by peptide affinity chromatography

MW

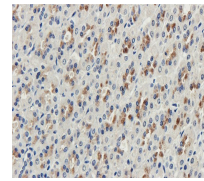
150 kDa

Uniprot ID
[D3ZSH7](#), [Q9UMD9](#), [Q07563](#)
NCBI
[000494](#), [000485](#)
Entrez
[1308](#)
Dilution Range

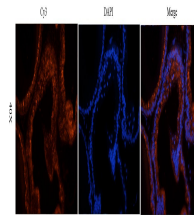
IHC-P: 1:100-600, IF/ICC: 1:100-600

Expiration Date

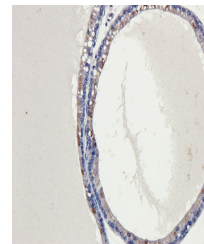
12 months from date of receipt.



IHC-P image of rat stomach tissue using ...



Immunofluorescence image of rat prostate...



IHC-P staining of rat prostate tissue us...