

---

## Product Datasheet

### Nesprin 1 antibody (orb385439)

**Description**

Nesprin 1 antibody

**Species/Host**

Rabbit

**Reactivity**

Guinea pig, Human, Mouse, Porcine, Rat

**Conjugation**

Unconjugated

**Tested Applications**

ICC, IF, IHC-P, WB

**Immunogen**

KLH conjugated synthetic peptide derived from human Nesprin 1. Please contact us for the exact immunogen sequence. The peptide is available as orb13070.

**Target**

Nesprin 1. This antibody has specificity with Nesprin 1.

**Form/Appearance**

10 mM PBS, 0.02% sodium azide

**Concentration**

- 100 µg (in 200 µl): 0.5 mg/ml- 200 µg (in 400 µl): 0.5 mg/ml

**Storage**

Store at 4°C for up to two weeks. For long term storage, aliquot and store at -20°C, avoid freeze/thaw cycles.

**Note**

For research use only

**Isotype**

IgG

**Clonality**

Polyclonal

**Purity**

Polyclonal antibodies are purified by peptide affinity chromatography

**MW**

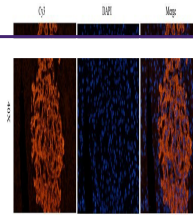
112 kDa

**Uniprot ID**
[Q8VHJ9](#), [Q8NF91](#), [Q6ZWR6](#)
**NCBI**
[149062](#), [033071](#)
**Entrez**
[23345](#)
**Dilution Range**

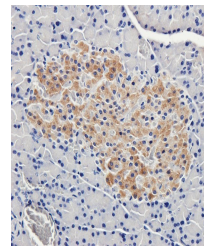
IHC-P: 1:100-600, IF/ICC: 1:100-600, WB: 1:200-2000

**Expiration Date**

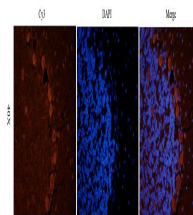
12 months from date of receipt.



IF image of rat pancreas tissue using Ne...



IHC-P image of rat pancreas tissue using...



Immunofluorescence analysis of guinea pi...