

Product Datasheet

Myosin 3 antibody (orb385438)

Description

Myosin 3 antibody


Species/Host

Rabbit

Reactivity

Guinea pig, Human, Mouse, Porcine, Rat

Conjugation

Unconjugated

Tested Applications

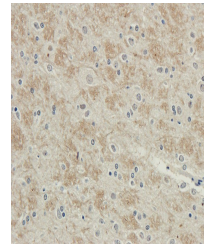
ICC, IF, IHC-P

Applications

IHC-P staining of rat ovary tissue using...

Immunogen

KLH conjugated synthetic peptide derived from human Myosin 3. Please contact us for the exact immunogen sequence. The peptide is available as orb13069.


Target

Myosin 3. This antibody has specificity with Myosin 3.

Form/Appearance

10 mM PBS, 0.02% sodium azide

Concentration

- 100 µg (in 200 µl): 0.5 mg/ml- 200 µg (in 400 µl): 0.5 mg/ml

IHC-P image of rat brain tissue using an...

Storage

Store at 4°C for up to two weeks. For long term storage, aliquot and store at -20°C, avoid freeze/thaw cycles.

Note

For research use only

Isotype

IgG

Clonality

Polyclonal

Purity

Polyclonal antibodies are purified by peptide affinity chromatography

Immunohistochemical staining of rat brai...

Uniprot ID
[P11055](#), [P13541](#), [P12847](#)
NCBI
[002470](#), [002461](#)
Entrez
[4621](#)
Dilution Range

IF/ICC: 1:50-500, IHC-P: 1:50-500

Expiration Date

12 months from date of receipt.