

---

## Product Datasheet

### MASP2 antibody (orb385436)

**Description**

MASP2 antibody

**Species/Host**

Rabbit

**Reactivity**

Human, Mouse, Porcine, Rat

**Conjugation**

Unconjugated

**Tested Applications**

ICC, IF, IHC-P, WB

**Immunogen**

KLH conjugated synthetic peptide derived from human MASP2. Please contact us for the exact immunogen sequence. The peptide is available as orb13067.

**Target**

MASP2. This antibody has specificity with MASP2.

**Form/Appearance**

10 mM PBS, 0.02% sodium azide

**Concentration**

- 100 µg (in 200 µl): 0.5 mg/ml- 200 µg (in 400 µl): 0.5 mg/ml

**Storage**

Store at 4°C for up to two weeks. For long term storage, aliquot and store at -20°C, avoid freeze/thaw cycles.

**Note**

For research use only

**Isotype**

IgG

**Clonality**

Polyclonal

**Purity**

Polyclonal antibodies are purified by peptide affinity chromatography

**MW**

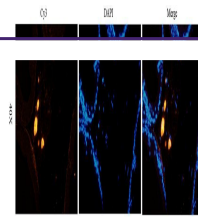
76 kDa

**Uniprot ID**
[O00187](#), [Q9JJS8](#), [Q91WPO](#)
**NCBI**
[006601](#), [006610](#)
**Entrez**
[10747](#)
**Dilution Range**

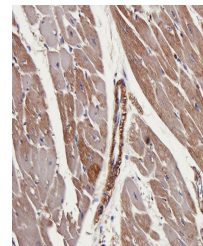
IHC-P: 1:100-800, IF/ICC: 1:100-800, WB: 1:200-1500

**Expiration Date**

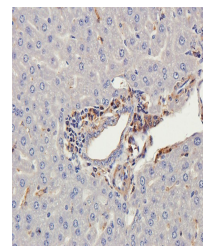
12 months from date of receipt.



IF image of rat prostate tissue using MASP2 antibody.



Immunohistochemical staining of pig heart tissue.



Immunohistochemical staining of paraffin-embedded tissue.